



# 2021-23 雙年報 BIENNIAL REPORT



雙向共融 同理零距離  
Embracing Social Inclusion

# 目錄

## Table of Contents

- |    |   |    |   |
|----|---|----|---|
| 01 | 前言 Foreword   | 15 | 連結地區資源與有需要家庭同行<br>Walk Hand in Hand With Families in Need                             |
| 03 | 抱負、使命與核心價值<br>Vision, Missions and Core Values  | 17 | 提供專業培訓以倡議雙向共融<br>Provide Professional Training to Promote<br>Mutual Inclusive Society |
| 05 | 五年來的里程碑 Milestones Over 5 Years   | 18 | 鳴謝 Acknowledgements   |
| 07 | 服務成果回顧 Service Highlights   | 20 | 組織架構 Organization Structure   |
| 09 | 各方支持及共同推廣「心大心細」共融 x 情緒桌遊<br>Various Supports for Inclusive Emotion Board Game                         | 21 | 機構管治 Corporate Governance   |
| 11 | 實踐「同理玩®家庭訓練模式」至親子共讀活動<br>Apply the "Equal Play® Family Training Model" to<br>Joint Reading Activities |    |   |





# 前言

## Foreword



今年是童SEN同戲創立的第五年，在後疫情時代我們堅持在社區織網，與有特殊教育需要的兒童及家長同行。在這個特殊時期，我們更加感受到培養同理心的重要性，也加大力度推動雙向共融的理念。

透過在社區不斷探索和實踐的過程，這兩年得到各方支持並取得了豐碩的成果。感謝兒童事務委員會撥款支持「同理玩®親子共讀樂趣多」計劃，我們出版了《同理玩®親子共讀訓練手冊 - 六式發問技巧》。這本手冊針對不同年齡層的孩子，為家長提供了六種不同的發問技巧，幫助他們引導孩子閱讀和思考，培養孩子的同理心和創造力。

同時，我們持續設計共融遊戲及教具。這些教具結合了遊戲和學習的元素，旨在幫助孩子學習情緒管理和表達的技巧，同時也鼓勵孩子和家長一起玩樂，增進家庭間的互動和理解。

On the fifth anniversary of SENMILY HK, we continue to build a community network to walk with children with SEN and parents in the post-epidemic era. In this particular moment, we stepped forward to consolidate our belief and vision of mutual inclusive society.

Our extensive community practices and exploration garnered support and fruitful results. The Commission on Children supported our Equal Play® Joyful Joint Reading project. We also published the "Equal Play® Joint Reading Training Manual - Six Types of Questioning" to nurture children's reading skills, empathy, and creativity through joint reading.

Besides, we continuously research and develop inclusive games and teaching tools. Gamified learning helps children express their emotions and improve vocabulary while playing with parents enhances family interaction and understanding of their children.

我們也鼓勵社區人士參與共融服務，透過舉辦多場免費的親子活動，為孩子和家長提供了一個良好的學習和交流平台。此外，我們還推動跨界別協作建立互助支援網絡，與不同領域的機構和專業人士合作，共同推動雙向共融和平等參與的理念。

在這兩年裡，我們致力為有特殊教育需要的兒童及家長創建雙向共融社會，並倡議平等參與機會。我們相信，每個孩子都應該得到平等的待遇和機會，不論他們是否有特殊教育需要。

同時，我們也通過不斷的實踐和創新，推廣「心大心細」共融 x 情緒桌遊計劃，這款桌遊旨在幫助孩子學習情緒管理和表達的技巧，同時也讓孩子體驗到同儕共融和互助的理念。我們也將「同理玩®家庭訓練模式」實踐至親子共讀活動，通過舉辦各種體驗學習活動，提升孩子和家長之間的情感交流和互動。

最後，我們要感謝所有支持童SEN同戲的朋友和合作夥伴，是你們的支持和鼓勵讓我們能夠不斷前進。在未來的日子裡，我們將繼續努力，推動雙向共融和平等參與的理念，與大家繼續前行。

We promoted community participation in inclusive services and parent-child learning with free activities prioritizing low-income families. We collaborated with professionals and partners from different sectors to establish a mutual support network for mutual inclusive and equal participation.

We strive to create a mutual inclusive society for children with SEN and their parents, also to promote equal participation opportunities these two years. We believe every child deserves equal chances, regardless of special educational needs.

We continue to develop the inclusive board game "Upheavals" to encourage children to express their emotions and promote the concepts of mutual inclusion. Also, our unique "Equal Play® Family Training Model" enhances parent-child communication through interactive activities during reading.

Finally, we warmly thank all friends of SENMILY HK for supporting us to promote mutual inclusion and equal participation. Moving forward, we will continue to work hard with everyone of you.





## 抱負 Vision

童星同戲有限公司(童SEN同戲)於2017年成立，為一間非牟利註冊慈善機構，致力為有特殊教育需要的兒童及家人建立雙向共融社會。

## 使命 Missions

童SEN同戲的使命符合聯合國可持續發展目標(SDGs)的價值觀，旨在平等、教育和夥伴關係等領域推動可持續發展，創建雙向共融社區。

1



研發共融  
遊戲及教具

Research and

Development on Inclusive  
Games and Toolkits

2



鼓勵社區  
參與共融服務

Encourage Community

Participation in  
Inclusive Service

3



推動跨界別協作  
建立互助支援網絡

Promote Cross Sector  
Collaboration to Establish  
a Mutual Support Network



Founded in 2017, SENMILY HK is a non-profit registered charitable organization, which strives to build up a mutual inclusive society for children with special educational needs and their parents.



Our missions align with the United Nations' Sustainable Development Goals (SDGs), promoting sustainable development values in equality, education and partnership to build up a mutual inclusive society.

## 核心價值 Core Values



### 同行

我們堅信家長經驗傳承的重要性，致力凝聚特殊教育需要家庭，建立家庭為本服務，營造同行互助社區精神。

### 同理

我們深信每人都有各自的優勢、貢獻與需要，致力連結不同人士自身經歷與學童需要，培養社區參與文化。

### 共融

我們堅守雙向共融的價值，致力研發創新教具及服務，讓學童與其他持份者在平等的關係中共同遊戲與學習。

### 共贏

我們積極建立跨界別協作網絡，以更有效地分配社會資源回應社區需要，營造長久穩固的互惠共贏社區。

### Companion

We prioritize experience sharing and connecting families with children with SEN through family-centered services and peer-to-peer support to foster a sense of mutual help network.

### Empathy

We believe that everyone has strengths, contributions, and needs so as to link public experiences to children's needs to enhance community involvement.

### Inclusion

We value mutual inclusion and strive to create innovative teaching tools and services for equitable relationships between children and stakeholders.

### Synergy

We establish cross sector collaborations to allocate social resources, respond to community needs, and create a stable community of mutual benefit and win-win outcomes.



同行  
Companion



同理  
Empathy



共融  
Inclusion



共贏  
Synergy



# 五年來的里程碑

## Milestones Over 5 Years .....



2017  
-  
2018

- 獲嶺南大學學生創業發展基金支持發展義工培訓計劃  
Lingnan University EKT Fund subsidized Volunteer Training Program

- 擔任浸會大學社會創新遊戲設計比賽專業評審  
Served as Baptist University "Game Design For Social Change" competition judge

- 擔任社會福利署義工嘉許禮分享嘉賓  
Served as Volunteer Award Presentation Ceremony guest speaker

2020  
-  
2021

- 獲香港社會服務聯會創匯點撥款開展「星空棋遇」計劃  
HKCSS Impact Incubator subsidized Equal Play Service Program

- 出版第一版「心大心細」共融情緒教育桌遊  
Published the first edition of the Inclusive Emotion Board Game "Upheavals"

2022  
-  
2023

- 童SEN同戲於2017年成立  
SENMILY HK established in 2017

- 獲屯門區議會撥款及仁愛堂青年夢工場支持推行共融社區支援計劃  
Tuen Mun District Council subsidized and Yan Oi Tong Youth Space supported Inclusive Community Support Program

2018  
-  
2019

- 獲稅務局確認慈善機構地位  
Recognized as a charitable institution by the Inland Revenue Department

- 獲賽馬會地區計劃支持開展「賽馬會親子樂悠悠x童SEN同你抗疫」計劃  
Hong Kong Jockey Club subsidized Anti-epidemic Service program

- 獲灣仔區議會支持開展「STEM x SEN社區教育服務」計劃  
Wan Chai District Council subsidized STEM x SEN Education Program

2021  
-  
2022

- 獲兒童事務委員會撥款支持「同理玩® 親子共讀樂趣多」  
The Commission on Children subsidized Equal Play® Joyful Joint Reading

- 出版《同理玩® 親子共讀訓練手冊 - 六式發問技巧》  
Published "Equal Play® Joint Reading Training Manual - Six Types of Questioning"

- 獲香港書展及公共圖書館邀請擔任嘉賓講者  
Served as Hong Kong Book Fair and Hong Kong Public Libraries guest speaker

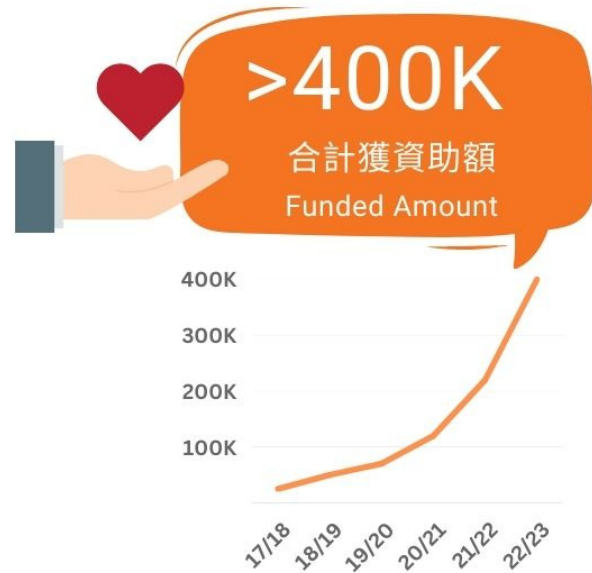
- 獲富衛集團支持發行第二版「心大心細」共融情緒教育桌遊  
FWD Group subsidized the second edition of the Inclusive Emotion Board Game "Upheavals"

- 獲屯門區議會撥款支持「至叻認讀小劍手」  
Tuen Mun District Council subsidized Inclusive Fencing Education Program



# 服務成果回顧

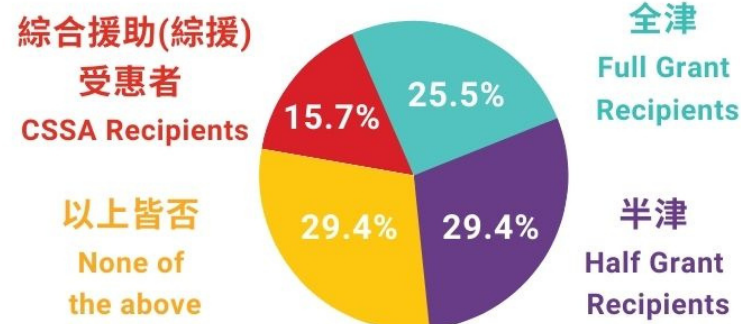
## Service Highlights



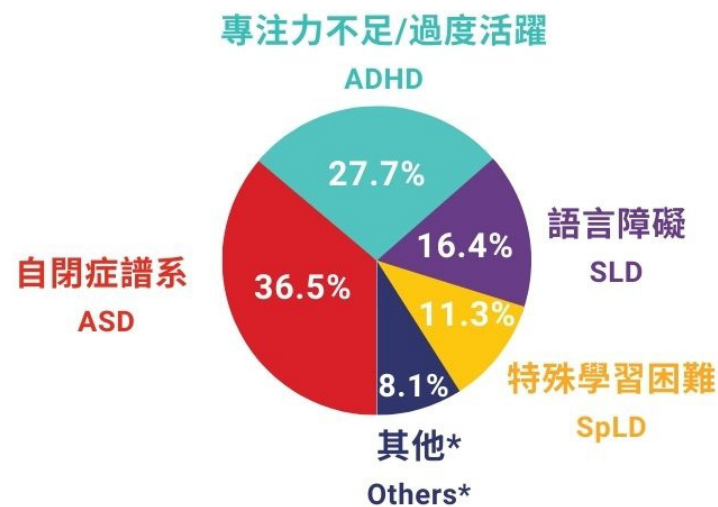
# 我們的家庭會員

## Our Family Members

### 經濟狀況 Financial Background



### 背景 Background



數據截至2023年03月31日 Data as of 31 March 2023

\*「其他」包括視覺障礙、聽覺障礙、精神病、智力障礙、肢體傷殘，有關會員數據按照教育局九項特殊教育需要進行分類。  
"Others" is referred to visual impairment, hearing impairment, mental illness, intellectual disability and physical disability.

# 我們的服務

## Our Services







## 各方支持及共同推廣 「心大心細」共融 x 情緒桌遊

Various Supports for Inclusive Emotion Board Game

童SEN同戲透過研發創新桌遊及親子課程，鼓勵有特殊教育需要的學童認識情緒詞彙和舒適地表達自己的情緒。服務也透過可調整的遊戲難度讓不同學生和家長及義工平等參與遊戲。計劃對學童的情感發展和社交技能的提升都有重要的幫助。

With the R&D of innovative board games and parent-child courses, SENMILY HK encourages children with SEN to learn emotion vocabulary and express their emotions in a comfortable environment. The adjustable game difficulty allows equal participation among students, parents and volunteers, contributing significantly to emotional and social development of children with SEN.

## 富衛集團資助派發「心大心細」共融 x 情緒桌遊

FWD Group Support on Inclusive Emotion Board Game "Upheavals" Distribution

於報告年度內，童SEN同戲獲富衛保險捐款支持，為200個有特殊教育需要學童的家庭捐贈「心大心細」桌遊，進行共融 x 情緒桌遊試玩會，為家庭提供舒適的共學及遊戲環境。

SENMILY HK was supported by FWD Insurance for donating the board game "Upheavals" to 200 families with children with SEN, and held inclusive game play sessions with comfortable co-learning experience for the families.

## 與中大學生及職員分享桌遊服務經驗

Board Game Service Sharing Session for CUHK Students and Staff

童SEN同戲獲香港中文大學邀請，為學生和教職員舉辦了桌遊工作坊，以推廣雙向共融理念。參與者透過各種遊戲，合作實驗不同的教學策略，以促進社區和團隊合作，協助有特殊教育需要的學生和家長參與遊戲。

SENMILY HK organized a board game workshop for university students and staff from CUHK to promote mutual inclusion. Participants engaged in various games and collaborated to develop new strategies, fostering community and teamwork to assist students with SEN and their parents.



## 參與「創．好．新界西」周末市集

"Re:Imagine NTW" Weekend Market

我們亦獲嶺南大學邀請出席創新活動，於黃金海岸擺設桌遊攤位，向大眾推廣共融遊戲的理念。

We were also invited by Lingnan University to set up a board game booth in the Golden Coast to promote inclusive play.



1 醫護行者  
Health In Action

2 循理會屯門青少年綜合服務中心  
Free Methodist Church Tuen Mun Children  
& Youth Integrated Services Centre

3 屯門區議會仁愛堂青年夢工場  
Tuen Mun District Council Yan Oi Tong  
Youth Space



## 實踐「同理玩®家庭訓練模式」至親子共讀活動

Apply the "Equal Play® Family Training Model" to Joint Reading Activities



童SEN同戲一直致力關注有特殊教育需要的孩子及家長的學習與遊戲需要，透過結合遊戲及實證為本的親子共讀模式，幫助孩子及家長建立起更緊密的關係，同時也能促進孩子的認知和語言發展。

SENMIPLY HK has been committed to addressing the learning and gaming needs of children with SEN and parents. By combining games with evidence-based joint reading, we help them to establish a closer relationship while promoting children's cognitive and language development.

## 兒童事務委員會資助「同理玩®親子共讀樂趣多」計劃

The Commission on Children subsidized Equal Play® Joyful Joint Reading

「同理玩®親子共讀樂趣多」以試點形式為全港各區家庭提供親子共讀實踐課程、家長講座、與繪本主題相關的手工創作活動、成果展及公眾展覽，讓家長與子女共同學習，一同享受閱讀的樂趣。

Equal Play® Joyful Joint Reading provide parent-child reading programs, parent talks, theme-related handicraft activities, public exhibition for families in Hong Kong in a pilot scheme. Parents and children can learn together and enjoy the pleasure of reading.

## 「同理玩®親子共讀樂趣多」閉幕禮暨成果展

Equal Play® Joyful Joint Reading Closing Ceremony

感謝民坊贊助場地，並獲得書送快樂及蕭博士文化工作室支持，「同理玩®親子共讀樂趣多」閉幕禮暨成果展於2022年11月20日假屯門愛定商場空中庭園順利完成。

Thanks to People's Place for sponsoring the venue, and the support from Read-Cycling and Dr Siu Cultural Studio, Equal Play® Joyful Joint Reading Closing Ceremony was successfully held in H.A.N.D.S on Nov 20, 2022.

是次活動除了頒發證書予參與計劃的家庭，更設有不同主題的家長講座及創意遊戲，包括偵探推理、科學探索、情緒認知及靜心感受，讓大人和小朋友一起動動腦筋之餘，亦可舒展身心。同場設有閱讀區，讓家庭投入在書本的奇妙世界之中。活動也展出家庭用心創作的「繪本魔法箱」，當中展示了小朋友們的無限創意及想像力。再次感謝各方支持，一同於社區推廣共讀及共融文化。

In addition to presenting certificates to participating families, this event also featured parent talks and game booths, including the themes of detective reasoning, science exploration, emotional cognition, and mindfulness. A reading area was set up for families to immerse in the world of books. It also showcased the "Magic Box" created by families, displaying the infinite creativity of children. Once again, thanks to all parties for their support in promoting a culture of reading and inclusion in the community.



1 醫護行者  
Health In Action

2 馬鞍山一所小學  
A Primary School in Ma On Shan

3 童SEN同戲家庭會員  
Family Members of SENMIPLY HK

1 專業顧問及計劃參加者大合照  
Group photo of advisors and program participants

3 閱讀區  
Reading Area

4 蕭博士家長講座  
Parent Talk by Dr Siu

2 「繪本魔法箱」展覽  
"Magic Box" Showcase

5 遊戲區  
Play Area



## 「繪本魔法箱」屯門愛定商場展覽

"Magic Box" Showcase in H.A.N.D.S

32位參與「同理玩®親子共讀樂趣多」共讀實踐課程的家庭學員透過運用課堂所學，創作了生動有趣的立體繪本，於屯門愛定商場展出兩星期。這些繪本中有發揮奇思妙想的「想像故事」、描寫美麗風景的「親子遊記」、紀錄重要時刻和經歷的「難忘的時光」。

32 participants who joined Equal Play® Joyful Joint Reading created vivid and interesting "Magic Box" using what they learned in class, which were exhibited at H.A.N.D.S for two weeks. These picture books included imaginative stories, parent-child travelogues, unforgettable moments and experiences.

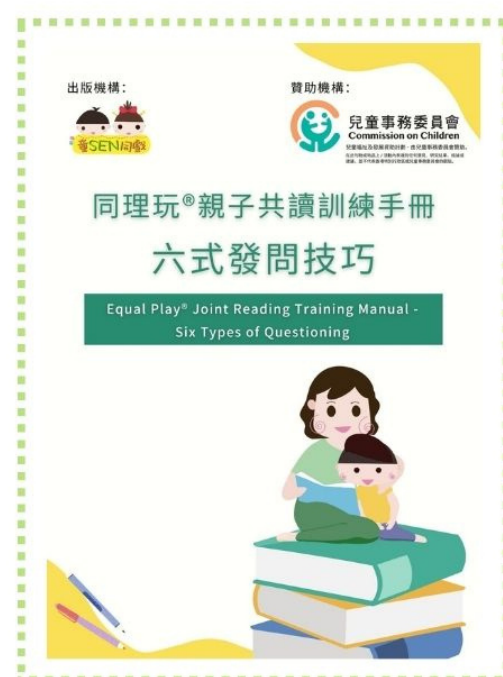


## 出版《同理玩®親子共讀訓練手冊 - 六式發問技巧》

Published "Equal Play® Joint Reading Training Manual - Six Types of Questioning"

這本手冊針對不同年齡層的孩子，為家長提供了六種不同的發問技巧，幫助他們引導孩子閱讀和思考，培養孩子的同理心和創造力。

This manual is aimed at children of different ages. It provides six different questioning skills to nurture children's reading skills, empathy, and creativity through joint reading.



## 到訪各區舉辦同理玩®「情緒王國」繪本工作坊

"Emotion Kingdom" Joint Reading Workshop Organized In Various District

由言語治療師帶領，透過與親子一同閱讀有關情緒管理的繪本和參與手作遊戲，讓家長提升共讀技巧，學習如何引導孩子有效地表達情感，能加強家庭成員的互相理解。

Led by a speech therapist, the "Emotion Kingdom" Joint Reading Workshop includes reading picture books about emotion management and handicraft activities for parents and children to improve joint reading skills and encourage children on how to effectively express emotions, enhancing mutual understanding within the family.



- 1 仁愛堂仁心向晴照顧者支援計劃  
Yan Oi Tong Lo Tai Chin Caring Foundation (Mental Health) Service Program
- 2 天水圍屏山公共圖書館  
Ping Shan Tin Shui Wai Public Library

## 獲香港書展邀請擔任「親子共讀樂趣多」分享會講者

Guest Speaker of the Hong Kong Book Fair Sharing Session

我們於2022年7月9日在奧海城OC Green Hub向家庭推廣社區閱讀文化並交流讀書心得，並即場作出共讀示範，反應踴躍。

On Jul 9, 2022, we promoted community reading culture and shared reading experiences with families at the OC Green Hub in Olympian City. A demonstration of parent-child reading was also conducted on-site, with enthusiastic responses from the audience.





## 連結地區資源與有需要家庭同行

Walk Hand in Hand With Families in Need



童SEN同戲透過連結地區資源，實踐及回應區內家庭的需要，協助提供更適切和有效的服務，以促進社區的發展和雙向共融文化，與家庭有需要家庭同行。

SENMIILY HK links with local resources to meet the needs of families in the community, providing more effective services to promote mutual inclusion, and walk hand in hand with families in need.

## 獲屯門區議會撥款支持「至叻認讀小劍手」

Tuen Mun District Council subsidized Inclusive Fencing Education Program

劍擊是能夠提升小朋友專注力及手腦協調的運動，一連8節的《智叻認讀小劍手》課程由言語治療師及劍擊教練帶領，結合讀寫策略及劍擊運動，讓家長及小朋友可以瞭解讀寫學習技巧。

Fencing is a sport that can enhance children's concentration and hand-eye coordination. The Inclusive Fencing Education Program consists of 8 sessions led by a speech therapist and fencing coach. It combines reading and writing strategies with fencing movements, allowing parents and children to learn about reading and writing skills.



## 舉辦「正確使用藥物治療促進特殊需要孩子的適應」 網上家長講座

Online Parent Talk on "Promoting adaptation of children with special educational needs through the correct use of medication treatment"

講座由童SEN同戲導師，註冊藥劑師向沙田一所小學的學生家長講解，分享了專注力不足/過度活躍症的特點及正確的藥物使用原則，以幫助有需要的學童適應學習生活。

The parent talk was delivered by a registered pharmacist to the parents of students in a primary school in Sha Tin. He shared the needs of children with ADHD and the principles of correct drug use to help students in need adapt to daily life.



## 民坊捐贈《阿努比斯》馬戲團表演門票

People's Place donated Circus Performance Ticket

感謝民坊支持，邀請30位童SEN同戲家庭會員觀賞由香港馬戲團主辦的馬戲團表演－《阿努比斯》，在2022年11月15日於屯門兆禧商場順利進行。

Thanks to People's Place for their support to 30 SENMIILY HK family members to watch the circus performance organized by the Hong Kong Circus at the Siu Hei Shopping Centre in Tuen Mun on November 15, 2022.





## 提供專業培訓以倡議雙向共融

Provide Professional Training to Promote  
Mutual Inclusive Society



童SEN同戲透過跨領域合作提供專業培訓以提高社區人士對特殊教育議題的關注，同時鼓勵他們自發推行社會創新計劃，共同創造雙向共融友善的社區。

To enhance community awareness of special education issues by providing professional training through cross-disciplinary collaborations. SENMILY HK encourages youth to initiate social innovation projects by themselves, creating a mutually-inclusive community.



1



2



3



1 TriAngle - CISL HKBU  
Techstars\_ Startup Weekend Social  
Innovation HKBU - Mentor

2 嶺南大學文化研究及發展中心  
「城市共享暑期學社」同行導師  
Centre for Cultural Research  
and Development, LU  
Urban Commons Summer  
Programme - Mentor

3 屯門區議會仁愛堂青年夢工場  
「教練及師友計劃 - 社區有搞作」  
同行督導  
Tuen Mun District Council Yan  
Oi Tong Youth Space - Mentor

## 鳴謝

## Acknowledgements.....

童SEN同戲謹此向所有一直支持我們發展共融同行計劃的人士、各撥款機構、大專院校、慈善機構和企業合作夥伴致以衷心謝意。感激各位熱心支持和信任，使童SEN同戲能夠繼續進步和邁向成功。

SENMILY HK would like to express the gratitude to all those who have been supporting our development of the mutual inclusion programs, including funding entities, universities, charities and corporate partners. Thank you for your enthusiastic support and trust so that SENMILY HK can continue to progress and move towards success to achieve mutual inclusion.

### 撥款機構 Funding Entities

兒童事務委員會兒童福祉及發展資助計劃 (2022-23)  
Commission on Children Funding Scheme for Children's Well-being and Development (2022-23)

富衛集團 (2022-23)  
FWD Group (2022-23)

屯門區議會仁愛堂青年夢工場 (2017-18, 22-23)  
Tuen Mun District Council Yan Oi Tong Youth Space (2017-18, 22-23)

屯門區議會 (2017-18, 22-23)  
Tuen Mun District Council (2017-18, 22-23)

社創基金 (2020-22)  
SIE Fund (2020-22)

香港賽馬會地區贊助計劃 (2020-21)  
The Hong Kong Jockey Club District Sponsorship Program (2020-21)

灣仔區議會 (2020-21)  
Wan Chai District Council (2020-21)

嶺南大學學生創業發展基金 (2018-19)  
Lingnan University Entrepreneurial Knowledge Transfer (EKT) Fund (2018-19)

截至2023年03月31日 Data as of 31 March 2023



## 特別鳴謝 Special Thanks

國際十字路會  
Crossroads Foundation

蕭博士文化工作室  
Dr Siu Cultural Studio

基督教香港信義會社會服務部  
Evangelical Lutheran Church Social Service - Hong Kong

醫護行者  
Health In Action

香港浸會大學流動程式教學資源中心  
Hong Kong Baptist University Apps Resource Centre

香港社會工作人員協會  
Hong Kong Social Workers Association

嶺南大學服務研習處  
Lingnan University Office of Service-Learning

民坊  
People's Place

香港大學社會服務團  
Social Service Group, HKU

渣打銀行  
Standard Chartered

香港中文大學博群全人發展中心  
The Chinese University of Hong Kong I-Care Centre for Whole Person Development

仁愛堂青年夢工場  
Yan Oi Tong Youth Space

女青屯門綜合社會服務處  
YWCA Tuen Mun Integrated Social Service Centre

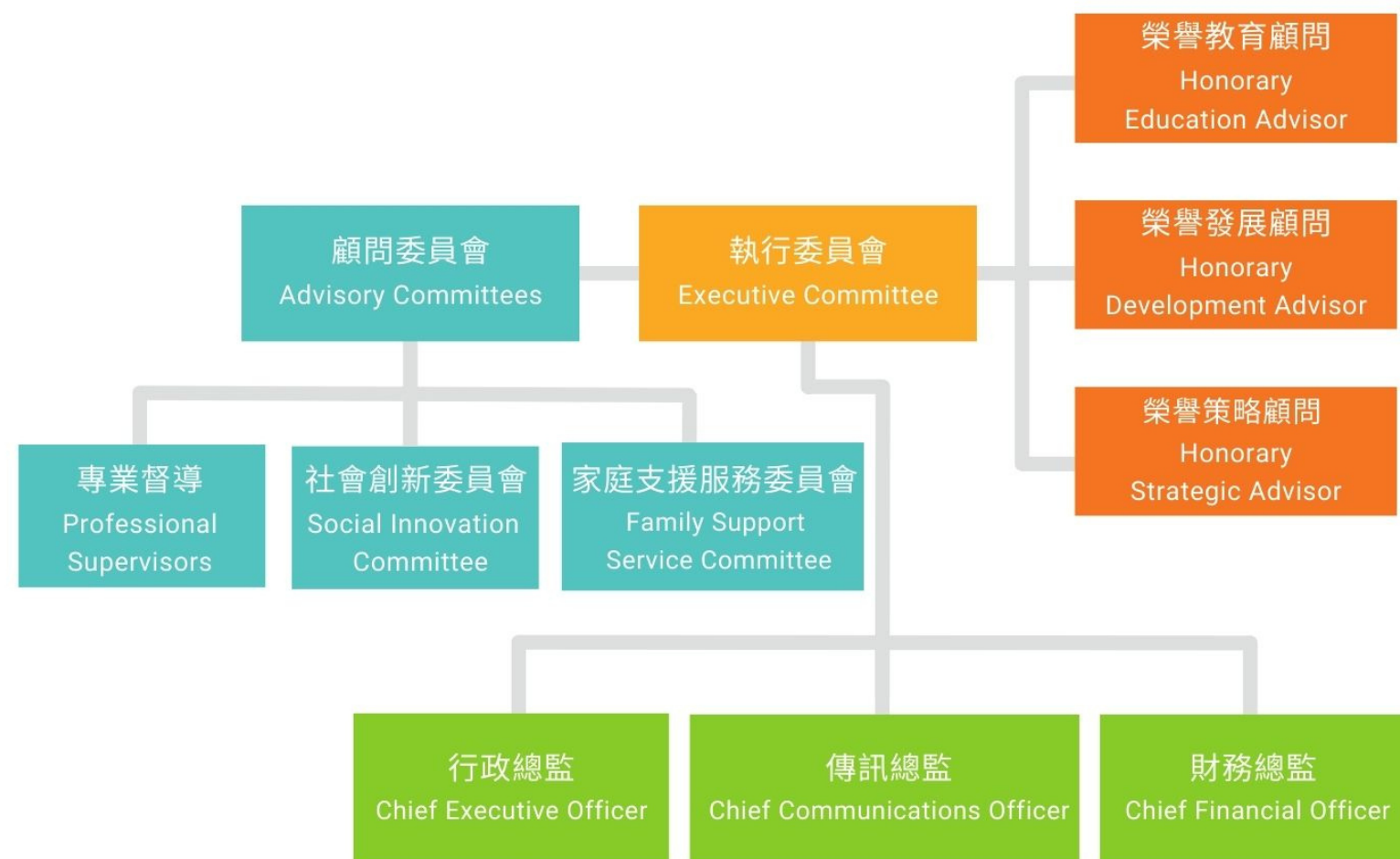
所有合作學校  
All Partner Schools

所有捐款者及義工  
All Donors & Volunteers

按英文字母順序排列 In alphabetical order  
截至2023年03月31日 Data as of 31 March 2023

## 組織架構

## Organization Structure





# 機構管治

## Corporate Governance .....

### 榮譽顧問 Honorary Advisor

蕭欣浩博士, 榮譽教育顧問  
Dr. Siu Yan Ho, Honorary Education Advisor

方穎璋先生, 榮譽發展顧問  
Mr. Arthur Fang, S-LP(C), Honorary Development Advisor

蕭志達先生, 榮譽策略顧問  
Mr. Allan Siu, Honorary Strategic Advisor

### 執行委員會 Executive Committee

黃厚豐先生, 行政總監  
Mr. James Wong, Chief Executive Officer

何凱兒女士, 傳訊總監  
Ms. Gwyneth Ho, Chief Communications Officer

呂素熒女士, 財務總監  
Ms. Candy Lui, Chief Financial Officer

# 機構管治

## Corporate Governance .....

### 專業督導 Professional Supervisors

王普彥醫生, 註冊醫生  
Dr. Posey Wong, Registered Medical Practitioner

楊國滔先生, 註冊藥劑師  
Mr. Jack Yang, Registered Pharmacist

葉嘉洪先生, 註冊職業治療師  
Mr. Chester Yip, Registered Occupational Therapist

張兆康先生, 註冊物理治療師  
Mr. Steven Cheung, Registered Physiotherapist

### 社會創新委員會 Social Innovation Committee

張劍國先生, 項目主任, 仁愛堂青年夢工場  
Mr. Cheung Kim Kwok, Project-in-charge (R.S.W.), Yan Oi Tong Youth Space

黃田麒先生, 浸會大學創新服務學習中心創新督導  
Mr. Nicolas Ooi, Innovation Lead, Centre for Innovative Service-Learning, HKBU

### 家庭支援服務委員會 Family Support Service Committee

陳美寶女士, 家長代表  
Ms. Mable Chan, Parent Representative

許嘉澧先生, 註冊社工  
Mr. Hui Ka Lai, Registered Social Worker

林妍嫻女士, 註冊社工  
Ms. Lam Yin Shan, Registered Social Worker

聶淑婷女士, 註冊社工  
Ms. Lillian Nip, Registered Social Worker

盧福榮先生, 註冊英語教師, 實習教育心理學家  
Mr. Harold Lo, Registered English Teacher, Educational Psychologist Trainee





網上捐款  
Online Donation



## 我願意捐款支持童SEN同戲 [一次性捐款 One-off Donation]

I would like to support SENMILY HK by making a donation

請在適當地方加上別號。Please tick where applicable.

- HK\$1,000** 提供情緒管理桌遊課程予有特殊教育需要的兒童，提升社交技巧  
To enhance social skills for children with SEN by emotion learning board game program
- HK\$800** 提供親子共讀工作坊予有特殊教育需要的家庭，提升學習動機  
To enhance learning motivation for children with SEN and parents by providing joint reading workshops
- HK\$500** 提供減壓工作坊予有特殊教育需要兒童的家長，支援照顧者的需要  
To care for the mental needs for caregivers by stress relieving workshops
- HK\$300** 提供體驗學習機會予有特殊教育需要兒童的家庭，促進親子溝通  
To enhance communication for children with SEN and parents by experiential learning opportunities
- HK\$** \_\_\_\_\_

港幣一百元或以上的捐款，可憑收據申請扣減稅項(稅局檔號 91/17361)。  
All donations of HK\$100 or above are tax deductible (IRD File no. 91/17361).

請填妥本表格，並電郵至 info@senmilyhk.com。如有查詢，請WhatsApp 9531 0593 與籌募及傳訊部同事聯絡。  
Please complete the form and return to us by email to info@senmilyhk.com. Please WhatsApp 9531 0593 if you have any enquiries.

### 捐款者資料 Donor's Information

英文姓名  
English Name: (Surname) \_\_\_\_\_ (Given Name) \_\_\_\_\_ Mr/ Ms/ Mrs  
中文姓名  
Chinese Name: \_\_\_\_\_ 先生/ 女士/ 太太

手提電話  
Mobile: \_\_\_\_\_ 辦公室/住宅電話  
Office/Home Tel: \_\_\_\_\_ 電郵  
Email: \_\_\_\_\_

地址  
Address: \_\_\_\_\_

捐款收據 Donation Receipt:

- 需要收據 Please issue donation receipt.  
 為節省行政開支, 毋須收據 To save administration costs, no donation receipt is required

收據抬頭 (若與上述捐款人不同方需填寫) Name of Receipt (Specify if differ from donor name above): \_\_\_\_\_

您的個人資料將保密處理，並只會用作捐款處理、發出收據和通訊等用途。請在方格內以✓表示：

Your personal information will be treated as strictly confidential and used solely for processing donation, issuing receipts and communication purposes. Please ✓ one of the boxes:

- 同意接收童SEN同戲的資訊。 I wish to receive information from SENMILY HK.  
 不同意接收童SEN同戲的資訊。 I don't wish to receive information from SENMILY HK.

### 捐款方法 Donation Methods

#### 銀行轉賬 Bank Deposit

請把善款直接存入童SEN同戲之大新銀行戶口: 040-309-158-11250。請連同存款收據正本/自動櫃員機單據正本寄回並保留副本。  
Please make a deposit into the SENMILY HK's bank account (DAH SING BANK A/C: 040-309-158-11250), and send us the original bank payment slip/ ATM slip with this form. Please keep a photocopy of the slip for your own record.

#### 劃線支票 Crossed Cheque

支票抬頭請寫「童星同戲有限公司」，並在支票背面寫上姓名及聯絡電話。  
Please make the cheque payable to "SENMILY HK LIMITED". Please mark your name and contact number on the back of the cheque.

#### 現金 Cash

簽名  
Signature: \_\_\_\_\_

日期  
Date: \_\_\_\_\_



網站  
Website



Facebook



捐助熱線：9531 0593

聯絡電郵：info@senmilyhk.com